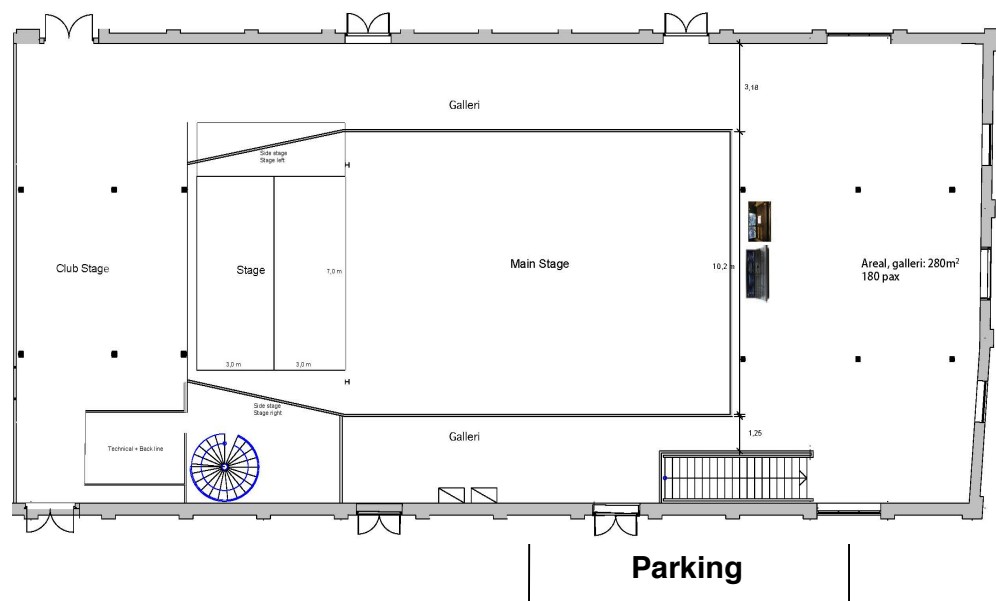


Union Scene

General info Main Stage



- Parking:** 15 meter parking spot located alongside the venue, in an alley called Fabrikkgata. Parking is only permitted on the left side of the street in marked up places. Permits will be issued by the venue representative. A 3 phase 32 A (400V) is located on the wall next to the parking spot.
- Load in:** Load in is at street level next to the parking space with direct access to the stage. In the winter, the sidewalk is heated to keep snow clear.
- Entrance Crew and Musicians:** Same as load in with direct access to dressing rooms
- Wifi:** Network: Union Gjest
Password: gjest2011
- Dressing rooms:** 5,5 m x 9 m catering and dressing room
5 m x 3,5 m, with bath & toilet
These facilities are located directly above the stage.
- dB Limit:** To ensure a healthy concert experience to our audience, and to comply with EU noise regulations towards our employees, we are enforcing a 103 dB (A) averaged over 15 minutes dB limit (Leq 15 = 103 dB(A)). Values will be measured at F.O.H. A properly calibrated measurement system Wave Capture RT-3 will be available to the sound engineer. Union Scene doesn't use a peak limiter or circuit breaker to enforce the rule.
- Fire and pyro:** Because of the over 100-year old building with wooden structure NO use of open fire or pyro is allowed. Any questions about this are to be directed to Light engineer Tommy Arschim or Technical Manager Toro Heiskala.
- Smoking:** Union Scene is a smoke free building and according to national laws smoking is prohibited in all public areas including the main stage and dressing rooms.



Union Scene

Sound Equipment Main Stage

FOH:	1	x	Avid S6L 32D With E6L-144 Engine / DigiCo SD-11
Stage rack:	1	x	Avid Stage 64 with 48 analog input, 24 analog output, 8 AES/EBU or ADAT Outputs. Shared Stage rack for monitor and FOH / DigiCo SD- rack 32/8
	6	x	Cat 6 between stage and FOH
Main Speaker System:	12	x	d&b Vi8
	4	x	d&b Vi12
	8	x	d&B V-GSUB
Amplification:	3	x	d&b D40
Front Fill:	4	x	d&b Yi7P
Amplification:	1	x	d&b D30
Delay	3	x	d&b Ti10L
Amplification:	1	x	d&b D30
Monitor:			
Wedges:	10	x	d&b M4
Amplification:	2	x	d&b D30
Microphones:	2	x	Shure Beta 91a
	1	x	Shure Beta 91
	2	x	Shure Beta 52
	4	x	Shure SM 58
	4	x	Shure Beta 58
	1	x	Shure KSM9
	8	x	Shure SM57
	2	x	Shure Beta 57
	2	x	Shure Ksm 109
	4	x	Shure Beta 98 AMP
	3	x	Sennheiser e604
	2	x	Sennheiser e904
	3	x	Sennheiser e906
	1	x	Sennheiser MD 421
	2	x	Neumann TLM 102
	4	x	Neumann Km 184
	3	x	Audio Technica ATM 350
	2	x	Audio Technica AT 4050 SM
	1	x	Audio Technica AE 2500

Updated 21.02.2023

DI:	4	x	Radial PRO 48 Active DI
	6	x	Radial ProDI Passive DI
	2	x	Radial ProD2 Passive Stereo DI
	2	x	Radial ProAV2 Passive Stereo
	1	x	DI Radial USB PRO
	6	x	LA Audio Active DI

**Frequencies
allowed for wireless
microphones**

510 - 518 MHz (K 26)
614 - 622 MHz (K 39)
670 - 686 MHz (K 46 - 47)
738 - 753 MHz (K - SDL)

Secondary frequency range: 494–694 MHz and 733–758 MHz with maximum permitted radiated power of 50 mW e.r.p.

The conditions for use of these secondary frequency bands are that the use does not disturb primary users of the band.

Contact:

Petter Sæterøy – Sound Technician
petter@drammenscener.no

Tony Ingibergsson – Sound Technician
tony@drammenscener.no

Toro Heiskala – Technical Manager
toro@drammenscener.no

dB Limit:

To ensure a healthy concert experience to our audience, and to comply with EU noise regulations towards our employees, we are enforcing a 103 dB (A) averaged over 15 minutes dB limit (Leq 15 = 103 dB(A)) and a 99 dB (A) averaged over 30 minutes (Leq 30 dB(A)). Values will be measured at F.O.H. A properly calibrated measurement system, WaveCapture RT-3 will be available to the sound engineer. Union Scene doesn't use a peak limiter or circuit breaker to enforce the rule.

Union Scene

Sound Equipment Main Stage (Extended)

Additional IO:	2	x	Avid Stage 16 (16 inputs, 8 outputs and two AES/EBU Outputs) In total 80 Mic Inputs, 48 analog outputs and 8 Digital AES/EBU Outputs
Monitor Mix:	1	x	Avid S6L 24D With E6L-144 Engine
Additional Wedges:	4	x	d&b M4
Drum Fill:	2	x	d&b Q-Sub
	1	x	d&b Q7
Amplification:	1	x	d&b D12
Wireless:	2	x	Shure AD4 Q A 470- 636 MHz
	4	x	Shure AD2 G56 470- 636 MHz w/ Beta 58 Heads
	6	x	Shure AD1 G56 470- 636 MHz Bodypacks
	6	x	DPA 4066 Headset microphones
In-Ear System:	8	x	Sennheiser EW 300 IEM G3 626 - 668 MHz (B)

Frequencies allowed for wireless microphones

510 - 518 MHz (K 26)
614 - 622 MHz (K 39)
670 - 686 MHz (K 46 - 47)
738 - 753 MHz (K - SDL)

Secondary frequency range: 494–694 MHz and 733–758 MHz with maximum permitted radiated power of 50 mW e.r.p.

The conditions for use of these secondary frequency bands are that the use does not disturb primary users of the band.

Contact:

Petter Sæterøy – Sound Technician
petter@drammenscener.no

Tony Ingibergsson – Sound Technician
tony@drammenscener.no

Toro Heiskala – Technical Manager
toro@drammenscener.no

Union Scene

Lighting Equipment Main Stage

Desk	1	x	GrandMA 3 Light
DMX Universes	6	x	3 used for house rig, 3 empty universes on stage
Dimmers	48	x	ETC Sensor+ 3kW pr channel
Automated Lights	13	x	Clay Paky Axcor Spot 400
	12	x	Martin Aura XB
	7	x	Martin Aura XB (front lights)
Generic Front Lights	4	x	LDR .alba f250 LED 3.200K fresnels
Generic Stage Lights	38	x	Par64 CP62 (paired two per channel)
	4	x	4lights (one channel per fixture)
	4	x	ETC ColorSource LEDPar (side lights)
	4	x	Martin Atomic 3000
	6	x	Floorcans CP62
Atmospheric	1	x	MDG the One + MDG the Fan

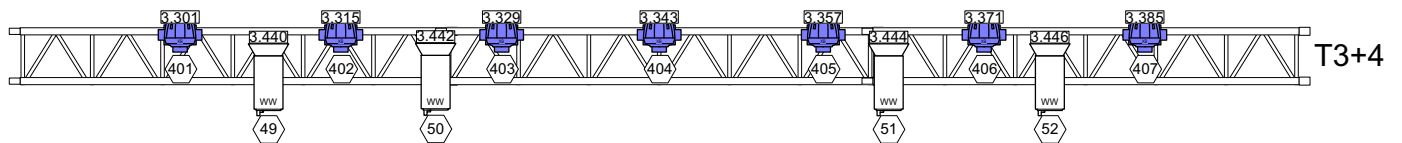
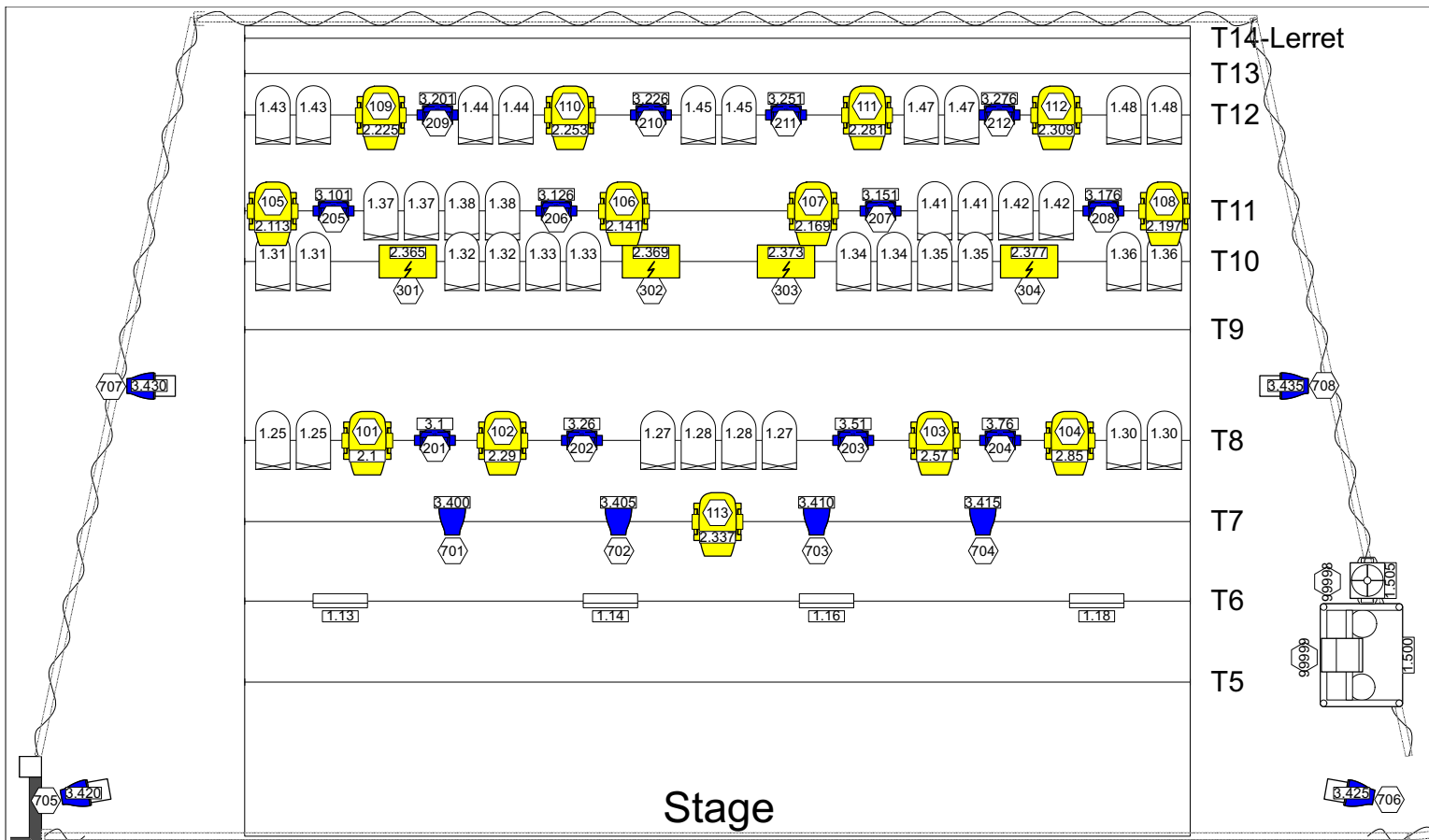
Contact:






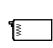




Toro Heiskala – Technical Manager
toro@drammenscener.no

Thomas Evensen – Lighting Technician
thomase@drammenscener.no

Ståle Kilen – Lighting Technician
stale@drammenscener.no

Tommy Aschim – Lighting Technician
tommy@drammenscener.no



-  Clay Paky Axcor Spot 400
-  Martin Mac Aura XB
Extended - Extended
-  Martin Mac Aura XB
Standard - Extended
-  Martin Atomic 3000 DMX
4ch
-  ETC ColorSource PAR
Medium Oval
-  LDR .alba f250 LED 3.200K
-  4light
-  PAR64 CP60
-  MDG The Fan
-  MDG The One Touring


**DRAMMEN
SCENER**

Union Scene		
Hovedscenen		
LX Plot	Drawn By Thomas Evensen	Date 27/10/2023

Union Scene

AV Equipment Main Stage

Projector:	1 x Epson EB- PU 2220 B- 3LCD Brightness: WUXGA 20.000 center lumens Resolution: 1,920 x 1,200 Aspect Ratio: 16:10 Lens: Epson ELP LM15 - Medium-throw zoom lens
Connections:	HDMI at downstage Right or FOH Atlona 4K/UHD 8x4 HDBaseT/HDMI Matrix distribution system
Screen:	6 x 5 Meters white electric screen
Monitor displays:	2 x 55" with moveable stands 4 x 40" wall mounted 1 X 32" Auto Que/ stage monitor

Union Scene

Stage and rigging Main Stage

- Stage:** Depth: 6 m
- Width: 7 m
- Height: 0 – 1,2m.
- Height to ceiling: 4,5 m at maximum stage height.
- The stage is divided in 2 parts, each 3 x 7 meter w/ hydraulic lift system. This makes it easy to set the preferred height of the stage (front and back). For maximum stability the stage should be set on mechanical legs after ended rigging. The stage is only to be operated by authorized personnel.
- Curtains:** Backdrop and flat sides of black molton.
- Manually operated front curtain of black molton.
- All curtains are certified fire resistant. Any backdrops that are to be hung must be certified fire resistant. Please send this in advance or bring to venue manager at latest on arrival.
- Hanging points:** There are 12 pipe battens individually operated by a motorized fly system. 10 of these are above the stage and 2 are above the audience for front lights. Battens nr 1 and 2 (audience) has a weight limit of 125 kg (PQ) and 100kg pr point (PL). Battens nr 3-12 has a weight limit of 160 kg (PQ) and 100 kg pr point (PL).
- Power:** 2x triple phase 63 A 400V at upstage right
- 1x triple phase 63 A 400V at balcony
- 12x single phase 16 A 230V at balcony
- 5x single phase 16 A 230V located around the stage for backline